



GMT MONTHLY MEMBERSHIP PROGRESS REPORT

Results as of: 6/30/2020

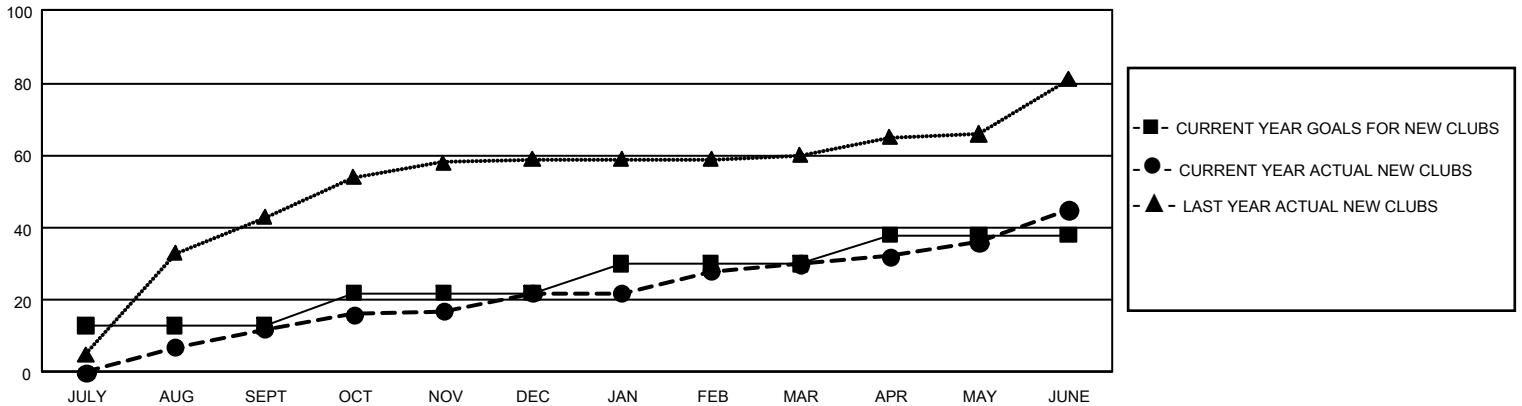
GMT Constitutional Area 7, Group C

GMT: OPEN

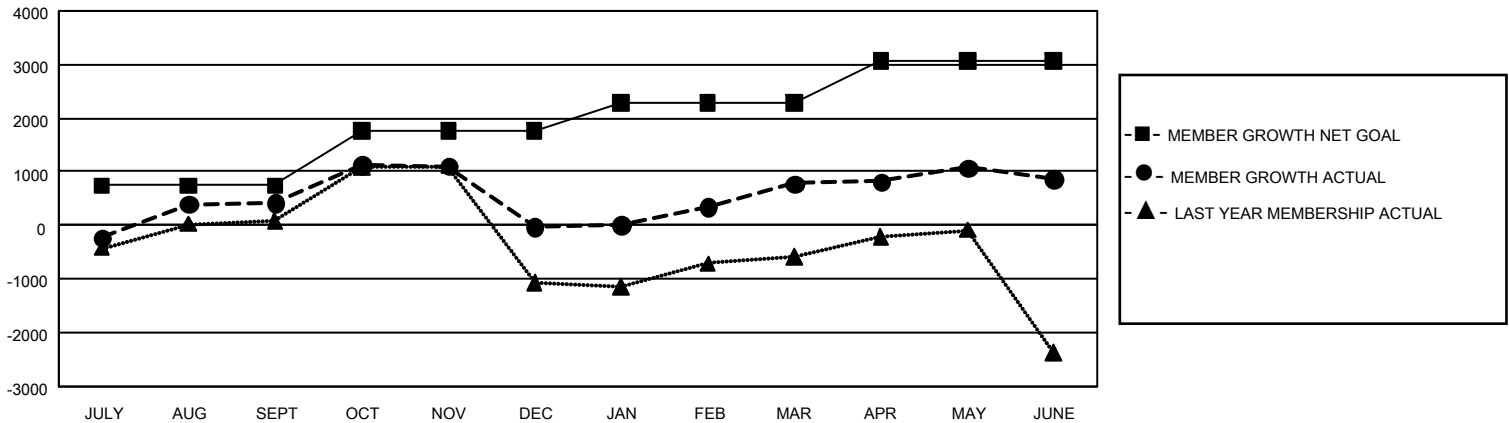
REPORT DOES NOT INCLUDE CLUBS IN UNDISTRICTED AREAS.

Clubs				Members			
RESULTS FOR 2019-2020				RESULTS FOR 2019-2020			
QUARTER	NEW CLUB GOAL	NEW CLUBS	DROPPED CLUBS	QUARTER	MEMBER GROWTH NET GOAL	MEMBER GROWTH ACTUAL	DROPPED MEMBERS ACTUAL (including transfers)
JULY/AUG/SEPT	39	12	24	JULY/AUG/SEPT	2,235	1,255	684
OCT/NOV/DEC	27	10	23	OCT/NOV/DEC	3,030	1,289	1,718
JAN/FEB/MAR	24	8	2	JAN/FEB/MAR	1,575	1,199	339
APR/MAY/JUNE	24	15	1	APR/MAY/JUNE	2,370	2,202	1,922

GOALS AND ACTUAL NEW CLUBS CUMULATIVE



GOALS AND ACTUAL MEMBERS CUMULATIVE



DROPPED CLUBS: 50	520 CLUBS OF 698 ADDED 1 OR MORE NEW MEMBERS	GENDER DISTRIBUTION MALE 10,437 (50.62%) FEMALE 10,183 (49.38%)
DROPPED MEMBERS	CLICK HERE FOR CUMULATIVE MEMBERSHIP DATA	TOTAL FAMILY UNIT MEMBERS 4,702 FAMILY MEMBERS PAYING HALF DUES 2,595
DECEASED 52 CLUB CANCELLED 254 OTHER 4,341 TOTAL 4,647		